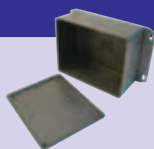


## Diecast Enclosures

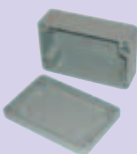
### FLANGED



Rugged, die-cast aluminum, with flanges for mounting to a wall or shelf. Aluminum provides good EMI/RFI shielding, and the two-piece lap joint construction protects against dust and water.

MODEL	DIMENSIONS	COLOUR	
1590AF	93 x 39 x 27mm	Unpainted	
1590AFBK	93 x 39 x 27mm	Black	
1590CF	120 x 94 x 53mm	Unpainted	

### WATERTIGHT



Rugged die-cast aluminum, providing good EMI/RFI protection. Tongue and groove construction, with a silicone rubber gasket, seals out water and dust. Black and unpainted also available.

MODEL	DIMENSIONS	COLOUR	
1590Z110GY	76 x 80 x 40mm	Grey	
1590Z120GY	125 x 80 x 45mm	Grey	
1590Z130GY	176 x 80 x 42mm	Grey	
1590Z150GY	221 x 121 x 60mm	Grey	

### STANDARD

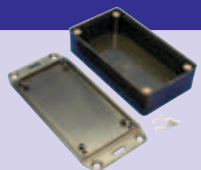


Rugged, die cast aluminum provides good EMI/RFI shielding. Lap joint construction protects against dust and splashing water. Integral guides accept 1.5mm (0.062") PC cards.

MODEL	DIMENSIONS	COLOUR	
1590A	92 x 39 x 27mm	Unpainted	
1590B	112 x 60 x 27mm	Unpainted	
1590BB	119 x 94 x 30mm	Unpainted	
1590C	120 x 94 x 53mm	Unpainted	
1590D	188 x 120 x 52mm	Unpainted	
1590E	188 x 120 x 78mm	Unpainted	
1590F	188 x 188 x 63mm	Unpainted	
1590H	52.5 x 38 x 27mm	Unpainted	
1590LB	51 x 51 x 27mm	Unpainted	
1590R	192 x 111 x 57mm	Unpainted	
1590WD	188 x 120 x 52mm	Unpainted	

## Polystyrene Enclosures

### FLANGED



These plastic enclosures have flanges for mounting to a wall or shelf. Designed to hold printed circuit boards: they come with integral card guides for 1.5mm (0.062") PCBs. Two-piece lap joint construction protects against dust and water (IP54).

MODEL	DIMENSIONS	COLOUR	
1591ASFLBK	100 x 50 x 21mm	Black	
1591BSFLBK	112 x 62 x 27mm	Black	
1591DSFLBK	150 x 80 x 46mm	Black	
1591MSFLBK	85 x 56 x 21mm	Black	

## Polystyrene Enclosures

### HANDHELD



Ergonomic design for handheld comfort. Two-piece lap joint construction provides protection against dust and splashing water. Recessed top panel ideal for membrane display. Medium impact flame-retardant polystyrene.

MODEL	DIMENSIONS	COLOUR	BATTERY COMPARTMENT
1599BSGY	130 x 65 x 25mm	Grey	No
1599BSGYBAT	130 x 65 x 25mm	Grey	Yes
1599ESGY	170 x 85 x 35mm	Grey	No
1599ESGYBAT	170 x 85 x 35mm	Grey	Yes
1599HSGY	220 x 110 x 44mm	Grey	No

### HEAVY DUTY



Rugged enclosures ideal for PCBs and small electronic devices. High-impact polystyrene, lighter than cast aluminum. Durable grey exterior finish.

MODEL	DIMENSIONS	COLOUR	
1594ASGY	56 x 56 x 28mm	Grey	
1594BSGY	81 x 56 x 28mm	Grey	
1594CSGY	105 x 66 x 33mm	Grey	
1594DSGY	131 x 66 x 43mm	Grey	
1594ESGY	167 x 107 x 53mm	Grey	

### INSTRUMENT



Made with two-piece tongue and groove construction. Molded in flame-retardant polystyrene with a textured finish. Front and rear panels are brushed aluminum. Horizontal and vertical PC board mounts provided. Integral brass bushings and self-adhesive rubber feet included.

MODEL	DIMENSIONS	COLOUR	
1598ASGY	157 x 94 x 36mm	Grey	
1598BBSGY	179 x 154 x 36mm	Grey	
1598BSGY	134 x 135 x 50mm	Grey	
1598CSGY	180 x 155 x 52mm	Grey	

### MULTIPURPOSE WITH CARD GUIDES



These black polystyrene cases are low cost, high impact and come with self-tapping screws. Card guides accept 1.5mm (0.062") PC cards. Blue and beige are available on request.

MODEL	DIMENSIONS	COLOUR	
1591ASBK	100 x 50 x 21mm	Black	
1591BSBK	112 x 62 x 27mm	Black	
1591CSBK	120 x 65 x 36mm	Black	
1591DSBK	150 x 80 x 46mm	Black	
1591ESBK	190 x 110 x 57mm	Black	
1591GSBK	121 x 94 x 30mm	Black	
1591HSBK	165 x 71 x 25mm	Black	
1591LSBK	85 x 56 x 35mm	Black	
1591SSBK	110 x 82 x 40mm	Black	
1591VSBK	120 x 120 x 90mm	Black	