

**Copper Clad**



A wide range of copper-clad boards suitable for making your own printed circuit boards. Available single- or double-sided.



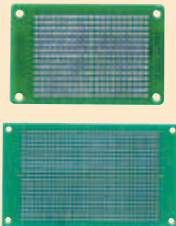
MODEL	DESCRIPTION	
503-PC	Single-Sided, 3x5"	
506-PC	Single-Sided, 4x6"	
509-PC	Single-Sided, 6x6"	
521-PC	Single-Sided, 12x12"	
580	Single-Sided, 36x48"	
550-PC	Double-Sided, 6x6"	
555-PC	Double-Sided, 12x12"	

**Copper Pads Predrilled**

**TRANS-BOARD SYSTEM**

**CIRCUIT-TEST**

Double-sided glass epoxy PC board with isolated tinned through hole solder pads. Ideal for small circuit designs.

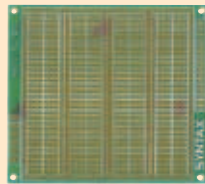


MODEL	DESCRIPTION	
PC-403	Trans-board system - 46x71mm, 315 holes	
PC-643	Trans-board system - 60x104mm, 672 holes	

**UNI BOARD SYSTEM**

**CIRCUIT-TEST**

Single-sided glass epoxy PC board with independent / double / triple pads / trace and a common bus. Ideal for small circuit designs. 1070 solder pads with holes.

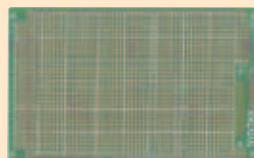


MODEL	DESCRIPTION	
PC-462905	UNI board system - 85x95mm	

**VME BUS COMPATIBLE**

**CIRCUIT-TEST**

Single-sided glass epoxy PC board. Ideal for prototyping to a VME bus compatible system.



MODEL	DESCRIPTION	
PC-412902	VME bus compatible - 100x160mm	

**Copper Clad Presensitized**

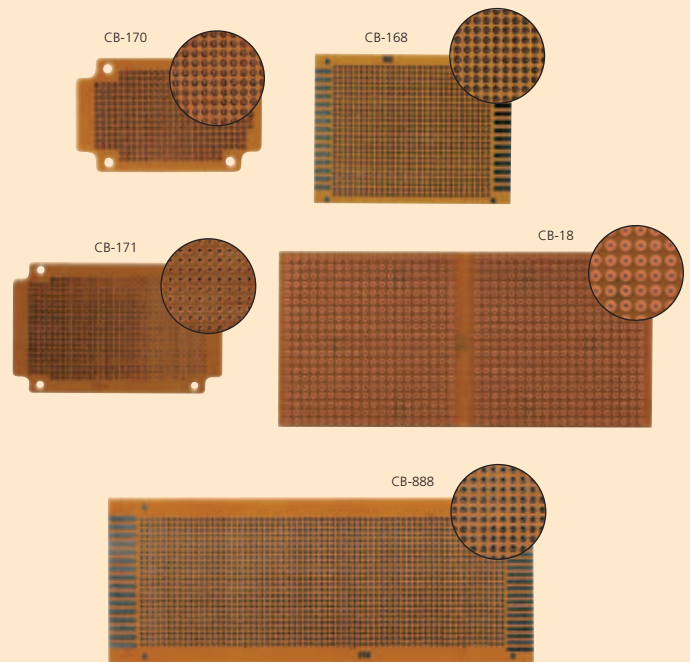
**CIRCUIT-TEST**

These 1 oz. copper clad boards are presensitized with positive photo resist. Simply place positive artwork on the board and expose for 6-10 min. with fluorescent lamp or 60-90 seconds with UV lamp. Your board is now ready to develop and etch.



MODEL	DESCRIPTION	
GS-1015-0.8	Single-Sided, 100x150x0.8mm	
GS-1015	Single-Sided, 100x150x1.6mm	
GS-1525	Single-Sided, 150x250x1.6mm	
GS-1530-0.8	Single-Sided, 150x300x0.8mm	
GS-1530	Single-Sided, 150x300x1.6mm	
GD-1015	Double-Sided, 100x150x1.6mm	
GD-1525	Double-Sided, 150x250x1.6mm	

**Copper Pads Predrilled Econo**



Single-sided copper boards suitable for general prototyping.

MODEL	DESCRIPTION	
CB-170	343 Predrilled Pads - 47x77mm	
CB-168	600 Predrilled Pads - 72x95mm	
CB-171	611 Predrilled Pads - 61x98mm	
CB-18	800 Predrilled Pads - 81x175mm	
CB-888	1608 Predrilled Pads - 72x95mm	